



GMI
AERO

Innovation for Aircraft Maintenance
Composite and Metallic Structures
Equipment, Solution Engineering, Training

The ANITA BONDING CONSOLE GMIEZH1401 for FLIGHT LINE OPERATIONS

- **For Hazardous Environment**
- **Applications to Fueled AIRCRAFT**
- **Designed for 2 Simultaneous Repairs & More Advanced Features**

PRESENTATION

To comply with safety procedures imposed to use bonding electrical equipment in an area classified as hazardous the ANITA Console Family offers a version fully compliant under the P/N: **GMIEZH1401**.

According to fundamental notions on explosive area classifications, the area surrounding the aircraft unfueled is considered potentially explosive because of presence **of potential flammable gaz (airplane fuel)** .The classification of the working area for portable equipment (in our case bonding console for composite repair) is **CLASS I - DIVISION 2**



MAIN FEATURES

In a compact size, the **ANITA GMIEZH** offers all the features to bond on the aircraft **one or two repair patches** of small or very large size.

It offers :

- 12 Thermocouple scan capacity,
- Test of heating blanket, detection of connection and of blanket break,
- Two separate repairs at two different moments with different cycles,
- Intuitive programming with productive dialogue through touch screen,
- Safety system to comply for use in explosive area.



GMI
AERO

13 rue George Auric 75019 Paris France

Tél.: + 33 1 42 82 11 44

Email: gmi@gmi-aero.com - Web site : <http://www.gmi-aero.com>

ANTI HAZARDOUS SAFETY FEATURES

The **Anita EZH** complies with the safety conditions required by the european standard CENELEC EN 50016 or by NFPA 496.

This is appropriate for Class I - Div 2 Area (ZONE 2 according to IEC)

The design of safety features are based on the principle of venting permanently the volume of the console to prevent introduction of explosive gaz (details on request)

1. Control of On/Off Power

A timer safety allows powering of the console only after a certain duration of air purge

2. Protection of fire and explosion due to arcs

All connections either to the console, between cables and with heating blankets are made through connectors with a specific design. This design allows to disconnect under power without arcing.

3. Leak current detection

Circuits are built in to check that no current leak develops. In case of detection , power is automatically cut. This covers the possible current leak of a heating blanket.

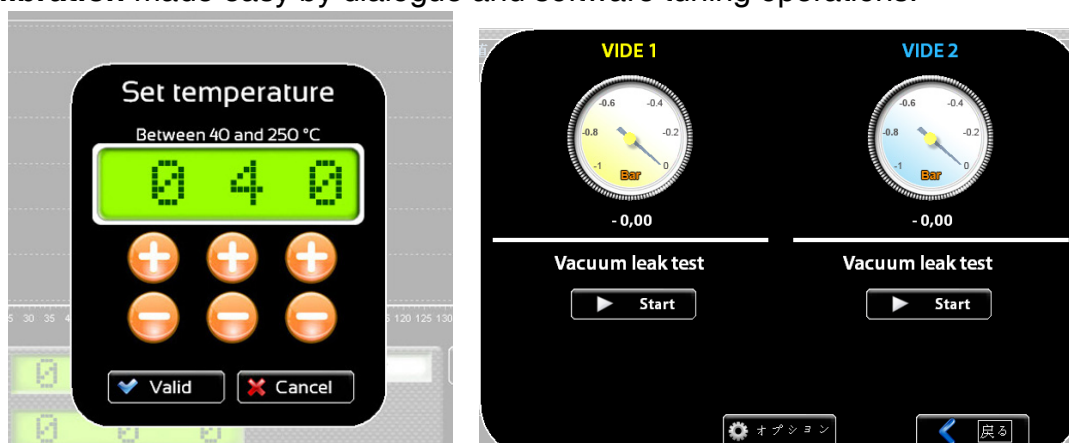
4. Heating blanket safety design

They are equipped on lower side with a ground mesh and with anti-arcing connector.

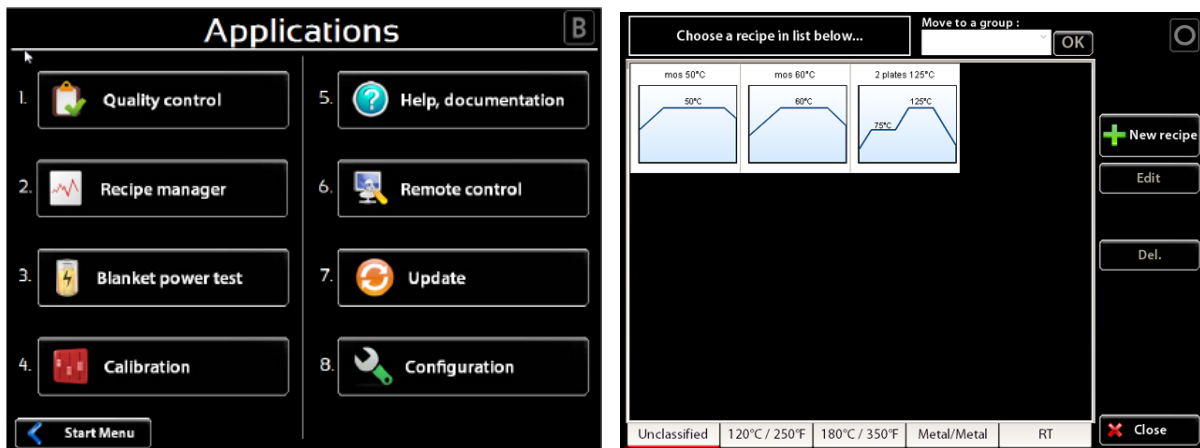
TOUCH SCREEN PANEL OPERATIONS

The Anita is equipped with a large touch screen panel. A sophisticated software allows easy operations for:

- Programming **easily** simple and elaborated cycles
- **Immediate** Start of Cycles,
- Process **Supervision** with graphical and tabulated presentations,
- Interactive selection of temperature **control modes** : hottest, mean, ...
- Heat control on **two independent channels** for 1 repair with 1 or 2 heating zones or 2 separate repairs,
- Large heating capacity with **6000 watts/220 Volts**
- Bag vacuum sensing for repair qualification; **2 sensors installed**,
- Panel **Printer**,
- **Blanket power check** and detection of shorts
- **USB** connections: 2 ports
- Automatic **pdf reporting**
- **Calibration** made easy by dialogue and software tuning operations.



Left : easy coding keyboard - Right : Bag Vacuum leak test



An example of different screens

OTHER TECHNICAL DATA

- Dimensions: W x D x H: 350 x 220 x 260 mm - 14 x 9 x 9 in - Weight:..., 9,6 Kg - 22 lb
- Colour of cases : yellow
- Volts: 220 or 120 VAC, automatic switching
- Power Capability: 30 Amps x 220 Volts = 6000 Watts or 30 x 120 Volts = 3600 Watts available on 2 independent power output
- High Quality Touch Screen Panel for Operator Dialogue and Data visualisation
Dimensions: 160 x 125 mm - 6.5 x 5 in.
- Sensing precision : temperature better than 0,4 °C /0,8°F; vacuum better than 0,050 bar/1,5 inHg

DELIVERY

The ANITA Console comes with all its accessories necessary to implement a bonding operation under vacuum: a complete set of cables, hoses, in a nice storage and transportation console.

Console Dim: 18 x 14 x 7 in (460 x 350-x 166 mm); Weight: 27 Lb. -12 Kg

Content List:

- A Power cable: 1 unit, length 5 m (6-ft.)
- Blanket cable: 2 units, length 3 m (10 ft)
- Vacuum Silicone Hoses: 2 units for return sensing, length 3 m (10 ft.)
- 2 Vacuum Valves,
- Thermocouple cables:12 of 3 m long (10 ft.)
- A first set of printer consumable,
- A User and Service Manual.

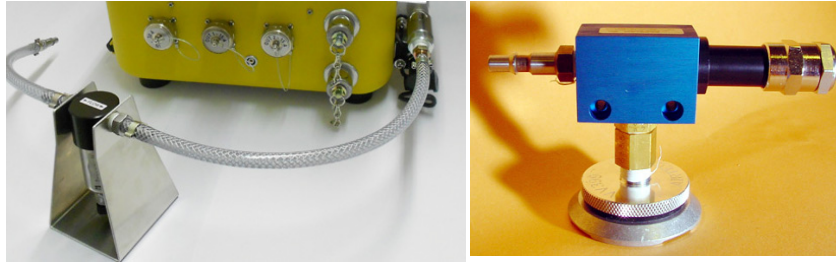
In option a transport case fully designed to contain the Anita, its accessories and blankets





CONSUMABLES & OPTION

- A box of 20 printer paper rolls P/N: GMINGI010-01
- A box of 10 printer ink cartridges P/N: GMINGI010-02
- A filter against oil and water recommended for the cleaning of purging air (see picture) P/N : GMIOTPF022
- A spare filter cartridge P/N : GMIOTPF022-01
- A venturi vacuum pump to be mounted on the bag itself P/N: GMIOTPV010 or 011 (US air in connector)



Left : Filter on purging air circuit ; right : Venturi vacuum pump mounted on its bag valve

HEATING BLANKETS FOR FLIGHT LINE OPERATIONS

Here below we give some typical dimensions of heating blankets
V= 1 for 120 Volts ; V = 2 for 230 Volts.

Item	P/N	Dimensions in cm	
001	GMIHBH015015-1Z-V	15 X 15	1 electrical zone
002	GMIHBH020020-1Z-V	20 x 20	1 electrical zone
003	GMIHBH025025-1Z-V	25 X 25	1 electrical zone
004	GMIHBH030030-1Z-V	30 X 30	1 electrical zone
005	GMIHBH040040-1Z-V	40 X 40	1 electrical zone
006	GMIHBH050050-1Z-V	50 X 50	1 electrical zone
007	GMIHBH015050-1Z-V	15 x 50	1 electrical zone

Other dimensions available and roudn blankets as well . Consult us